

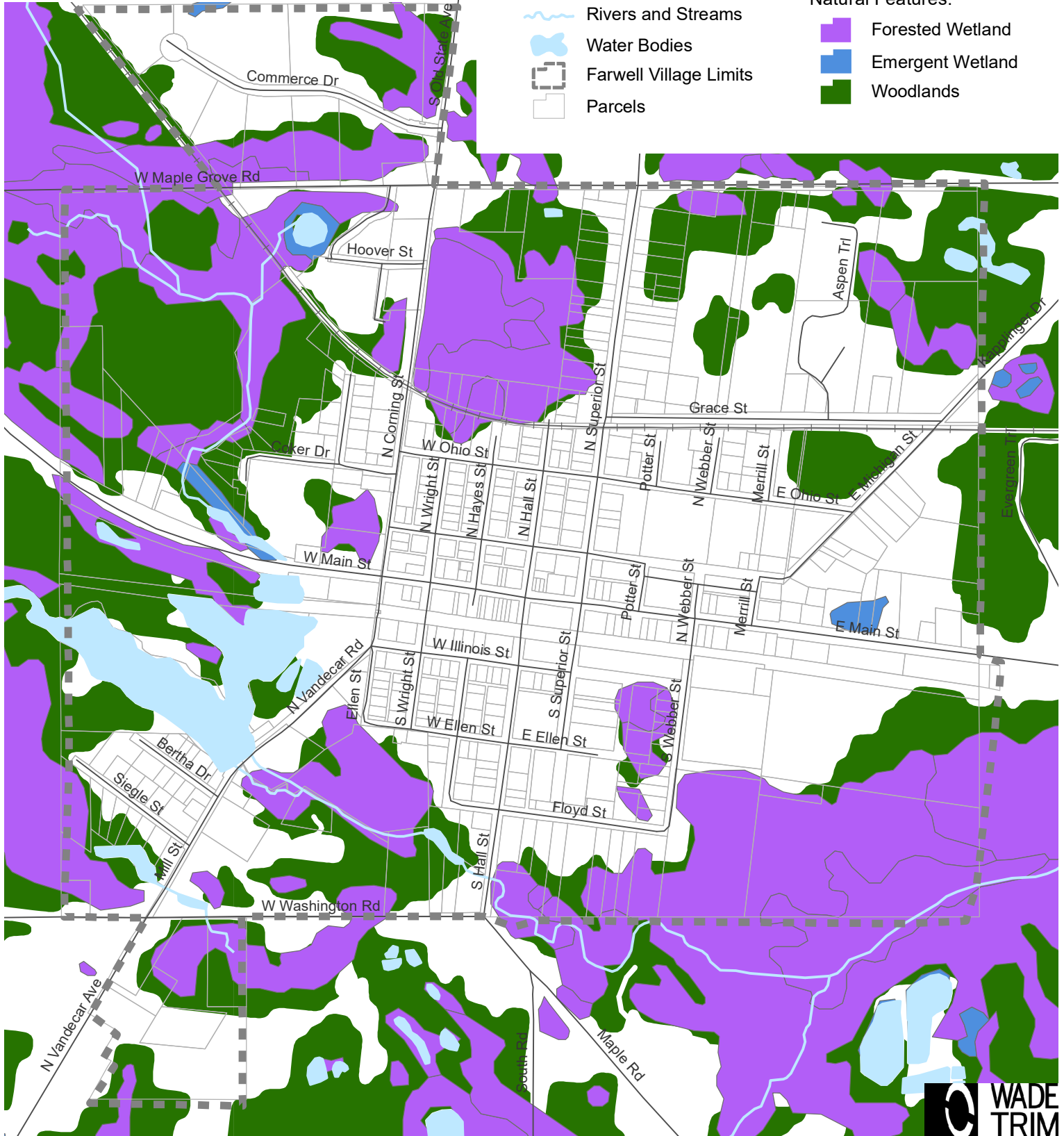
February 2024

Source: Michigan Geographic Data Library, 2019; Clare County Equalization Department, 2023; Wade Trim, January 2024.

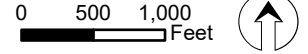
- Streets
- Railroads
- Rivers and Streams
- Water Bodies
- Farwell Village Limits
- Parcels

Natural Features:

- Forested Wetland
- Emergent Wetland
- Woodlands



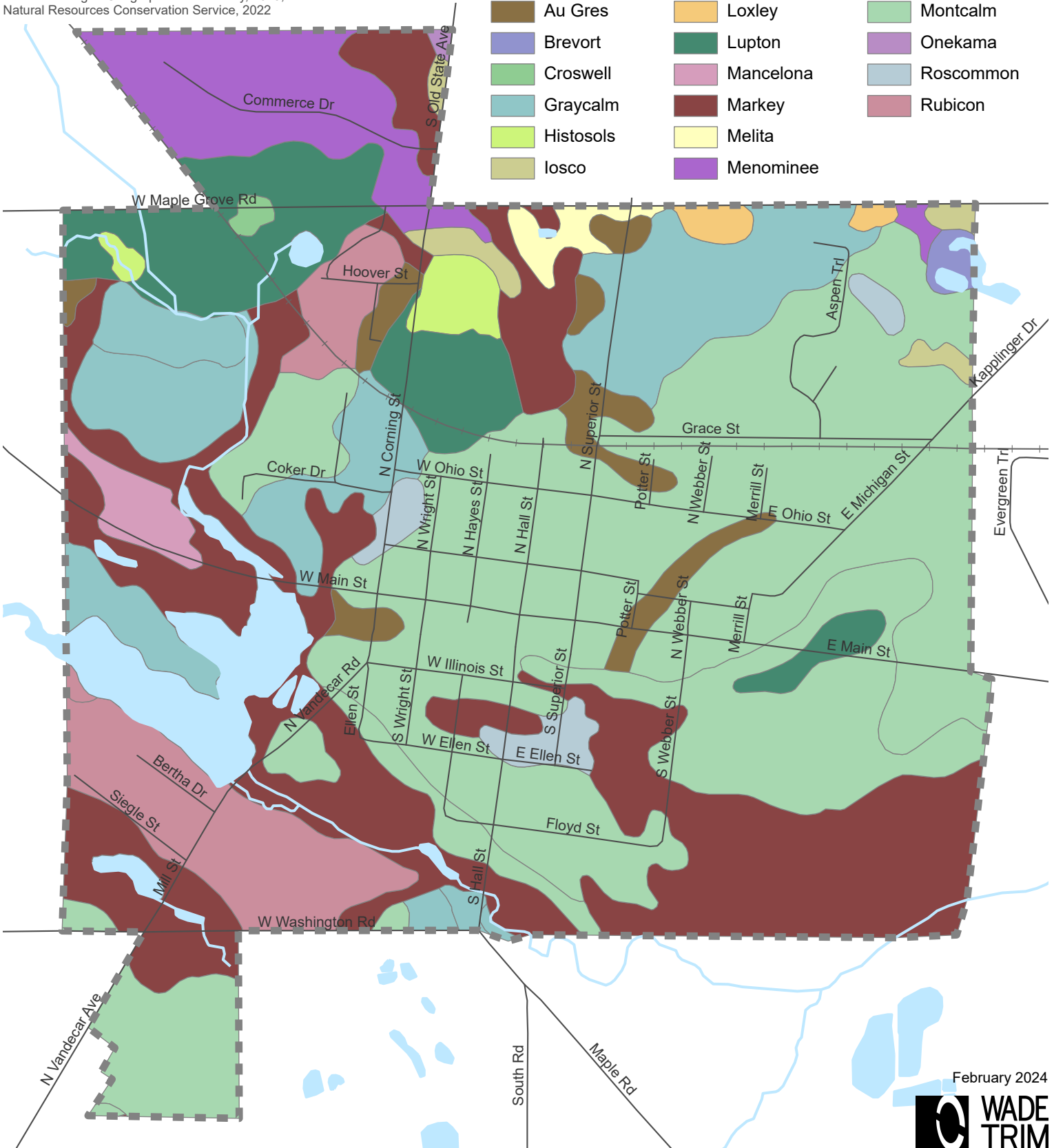
- Streets
- Farwell Village Limits
- Rivers and Streams
- Water Bodies
- Railroads



Source: Michigan Geographic Data Library, 2019;
Natural Resources Conservation Service, 2022






Soil Types:

- | | | |
|-----------|-----------|-----------|
| Au Gres | Loxley | Montcalm |
| Brevort | Lupton | Onekama |
| Croswell | Mancelona | Roscommon |
| Graycalm | Markey | Rubicon |
| Histosols | Melita | |
| Iosco | Menominee | |



February 2024







-  Streets
-  Rivers and Streams
-  Farwell Village Limits
-  Railroads
-  Water Bodies

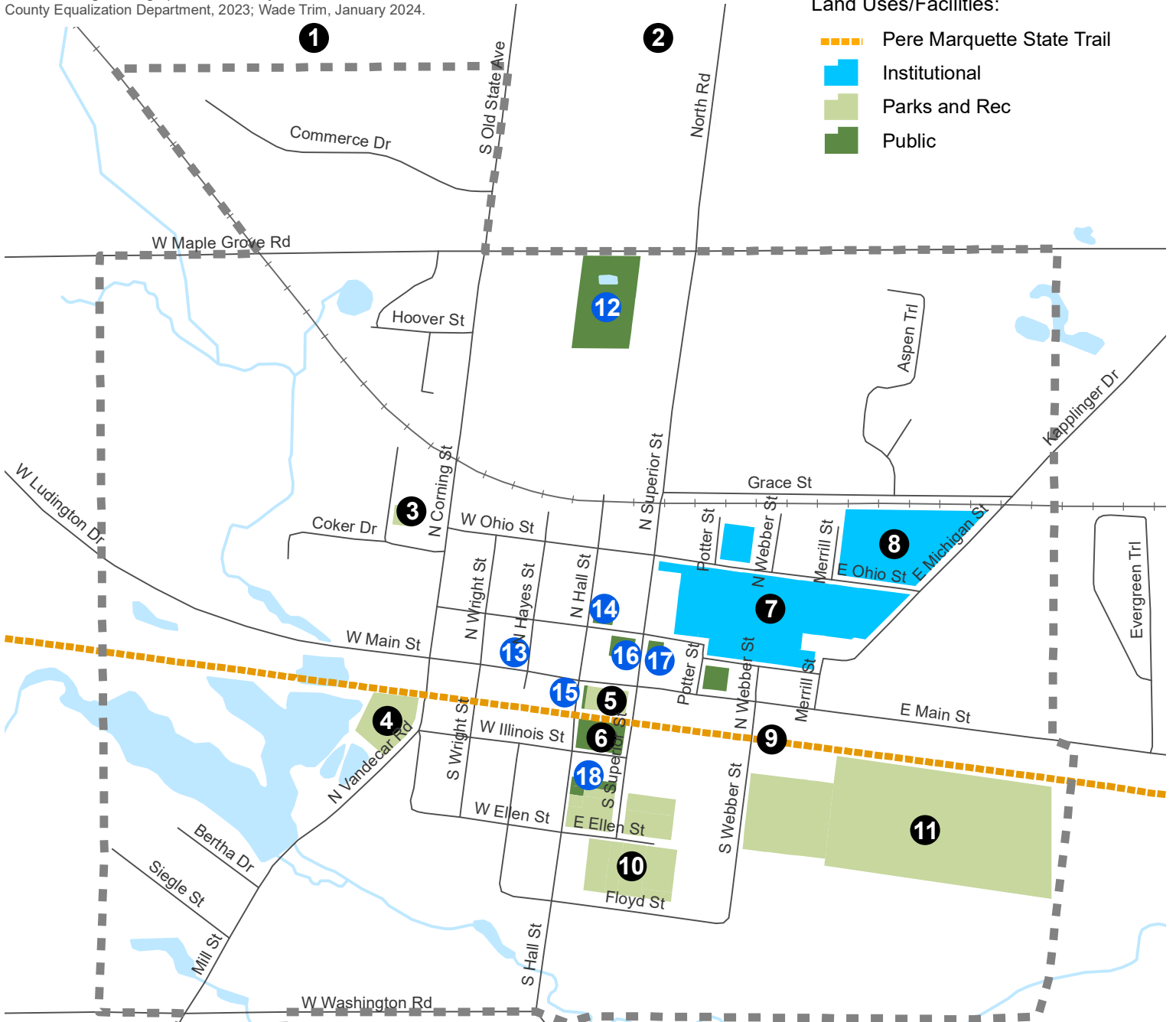
0 500 1,000 Feet



Source: Michigan Geographic Data Library, 2019; Clare County Equalization Department, 2023; Wade Trim, January 2024.

Land Uses/Facilities:

-  Pere Marquette State Trail
-  Institutional
-  Parks and Rec
-  Public



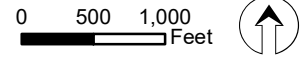
Recreation Facilities:

- 1) Eagle Glenn Golf Course
- 2) Farwell Area Schools Sports Complex
- 3) Coker Park (Private)
- 4) Mill Pond Park
- 5) Littlefield Village Park
- 6) Farmer's Market
- 7) Farwell Area Schools
- 8) Farwell School Forest
- 9) Pere Marquette State Trail
- 10) Little League Complex
- 11) Farwell Fairgrounds

Municipal Facilities:






- 12) Municipal Well Fields/Water
- 13) Post Office
- 14) Surrey Township Library
- 15) Village Hall
- 16) Fire Station/Township Hall
- 17) Surrey Township Offices
- 18) Dept. of Public Works Maintenance Facility
- 19) Wastewater Treatment Facility

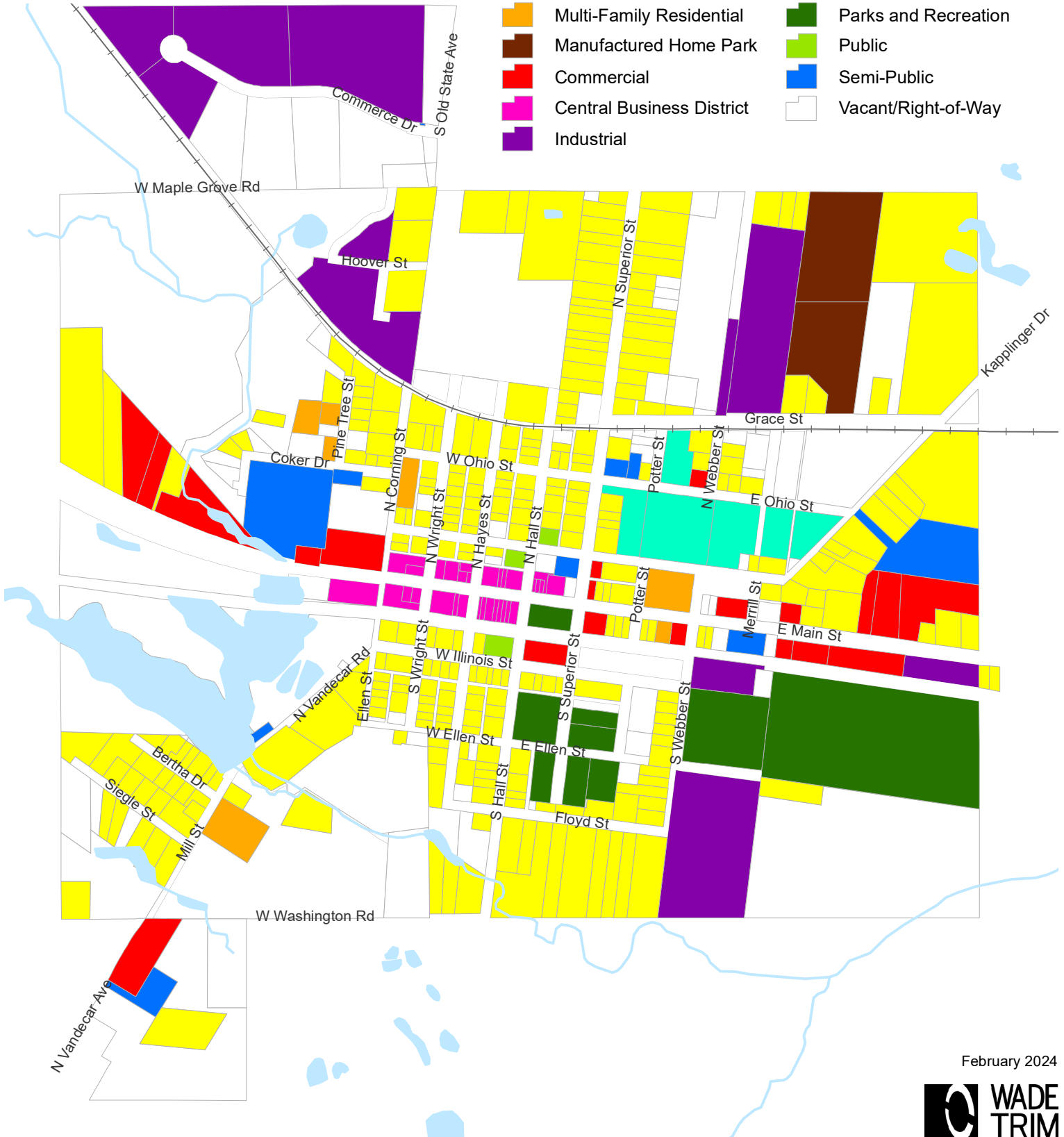
-  Parcels
-  Rivers and Streams
-  Railroads
-  Water Bodies



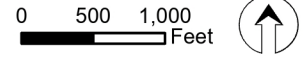
Source: Michigan Geographic Data Library, 2019; Clare County Equalization Department, 2023; Wade Trim, January 2024.

Land Uses:

-  Single-Family Residential
-  Multi-Family Residential
-  Manufactured Home Park
-  Commercial
-  Central Business District
-  Industrial
-  Institutional
-  Parks and Recreation
-  Public
-  Semi-Public
-  Vacant/Right-of-Way



-  Parcels
-  Rivers and Streams
-  Railroads
-  Water Bodies



Source: Michigan Geographic Data Library, 2019; Clare County Equalization Department, 2023; Wade Trim, 2025

Land Uses:

-  Low Density Residential
-  Central Business District
-  Medium Density Residential
-  Industrial
-  Multiple Family Residential
-  Parks and Recreation
-  Manufactured Home Park
-  Public/Semi-Public
-  General Commercial
-  Vacant/Right-of-Way

